

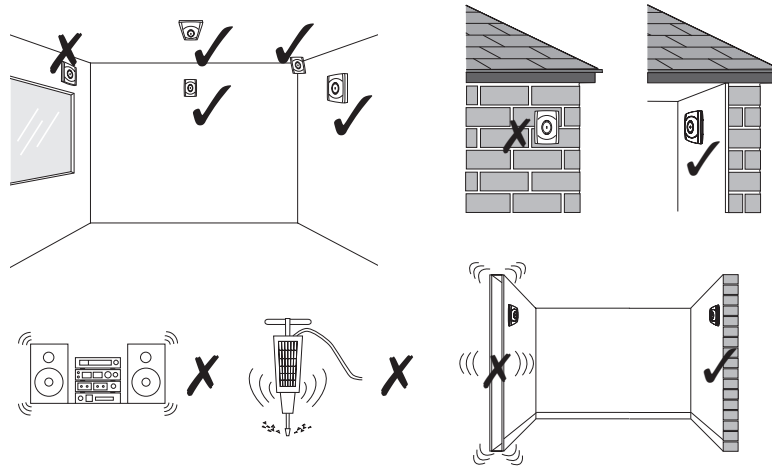
Instruction Manual

Premier Impaq Glass Break



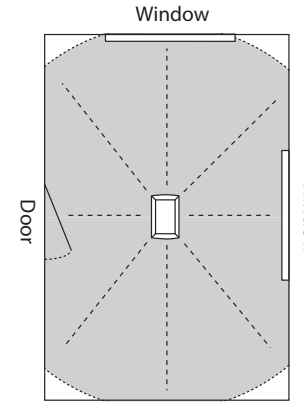
INS 229-3

1

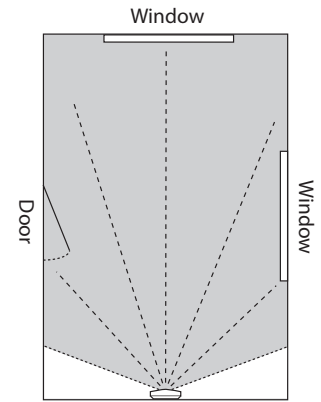


2

2.1



2.2



3. Premier Impaq Glass Break

Warranty: 12 month replacement warranty.

The Impaq Glass Break is designed to detect the sound of breaking glass and activate an alarm control panel. As the Impaq Glass Break is not a complete alarm system, but only a part thereof, Texecom cannot accept responsibility or liability for any damages whatsoever based on a claim that the Impaq Glass Break failed to function correctly.

Under very rare conditions, it may be possible for a combination of random sounds to trigger an alarm. This is unavoidable due to the complex nature of glass break waveforms.

The detector is not guaranteed to respond if any type of plastic film has been adhered to the protected windows prior to smashing.

Window cracking due to the application of slow pressure may not cause an alarm, as the detector is not designed for this.

To ensure greater intruder detection, use this detector with other interior sensors since acoustic glass break detectors may not detect every glass break event.

Due to our policy of continuous improvement Texecom reserves the right to change specification without prior notice.

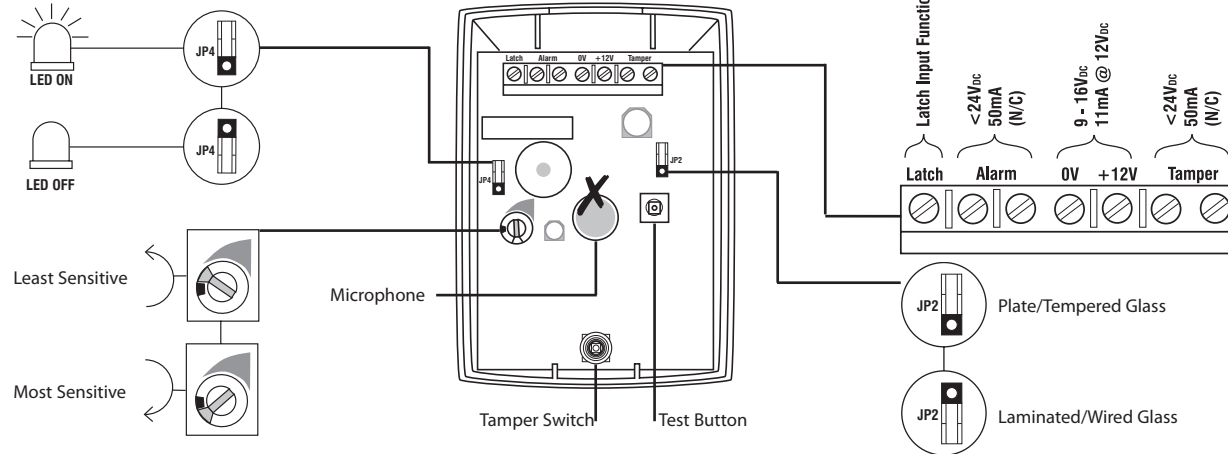
Regulatory information

Supplier: Texecom Ltd, Haslingden, Lancashire, BB4 4PW, UK.

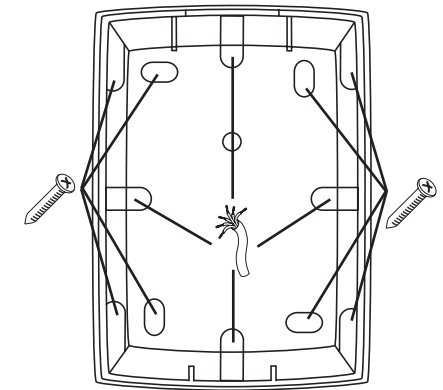
Weee Directive: 2002/96/EC (WEEE directive): Products marked with this symbol cannot be disposed of as unsorted municipal waste in the European Union. For proper recycling, return this product to your local supplier upon the purchase of equivalent new equipment, or dispose of it at designated collection points. For more information see: www.recyclethis.info.

RoHS Directive: 2002/95/EC RoHS Compliant. Hereby, Texecom declares that this device does not contain lead, mercury, cadmium, hexavalent chromium, polybrominated biphenyls (PBB) or polybrominated diphenyl ethers (PBDE) in more than the percentage specified by EU directive 2002/95/EC, except exemptions stated in EU directive 2002/95/EC annex.

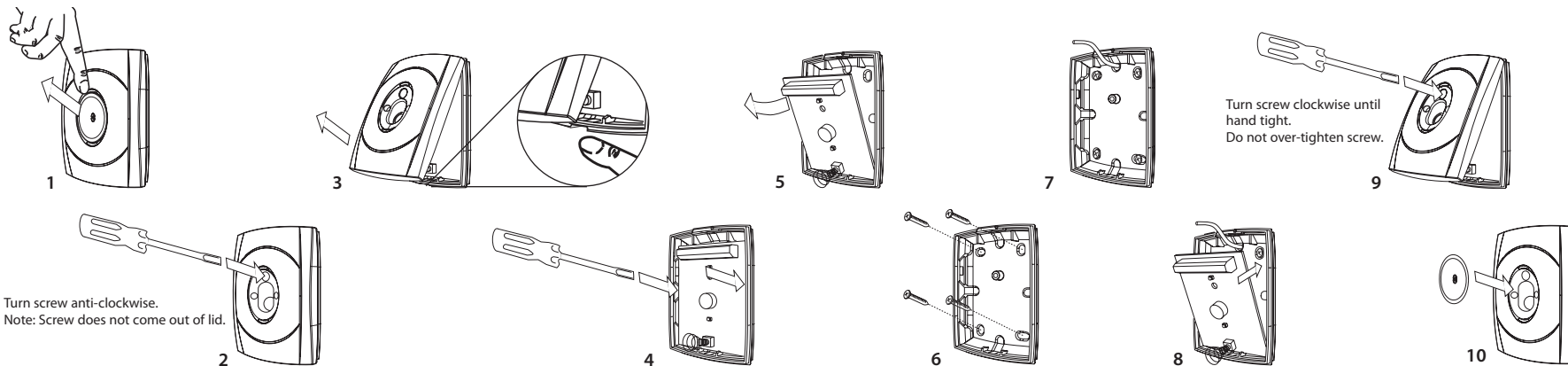
CE Directive: 2004/108/EC (CE directive)



4.



5.



Specifications

Voltage	9 - 16VDC
Current Consumption (Standby)	11mA
Current Consumption (Alarm)	10mA
Sensor Type	Extended Response Electret Microphone
Minimum Window Size	300mm x 300mm
Glass Type Detection	Plate Tempered Laminated Wired
Glass Thickness	2.4 - 6.4mm.
Maximum Range	9m, 170°
Alarm Relay Output	Normally Closed
Contacts Rating	<math><24V_{DC}</math>, 50mA, (18Ω)
Operating temp	-10°C to +55°C (14°F to 131°F)
Weight	70g
Dimensions	87mm x 62mm x 26mm (HxWxD)
Relative humidity	Max. 95%

Security grade: EN Grade 2 **Environmental class:** Class II

Standards: EN50131-1

Premier Impaq Glass Break is a trademark of Texecom Ltd.

Registered Design Number: 2105723

MADE IN ENGLAND © 2012 Texecom Ltd www.texecom.com

