



MYCOM
TALKING EVERYWHERE



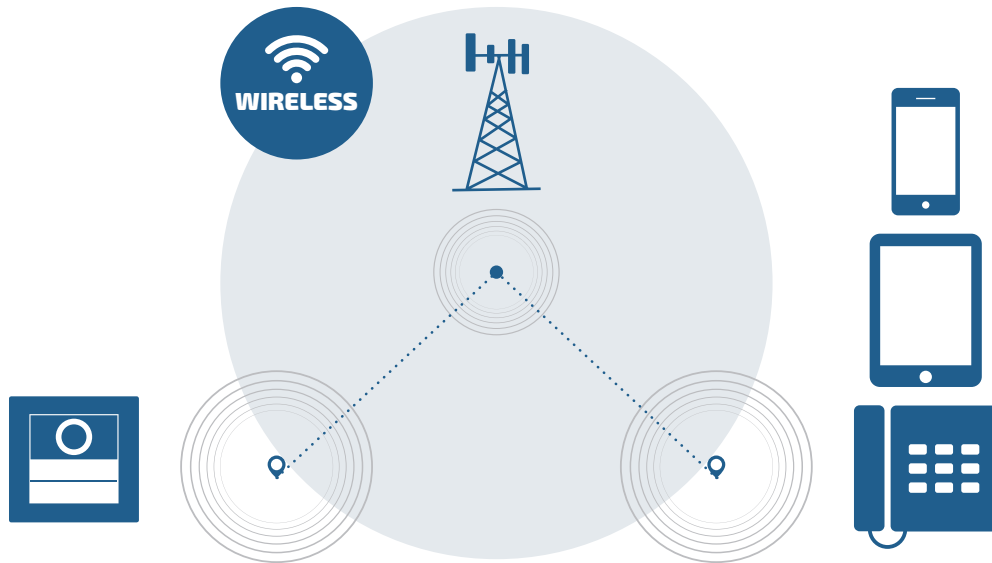
FARFISA
INTERCOMS SINCE 1967

MYCOM

TALKING EVERYWHERE

The entry door panel and a power supply is everything we need to get a **complete and reliable intercom installation, without cabling at all.**

MyCom - GSM 4G technology - allows the communication and access control with incredible easiness installation.



TECHNICAL FEATURES

- 4G technology
- Connection to the Alba bus
- Max 200 users
- SIM card needed (Nano SIM)
- Prepaid cards management
- Power: 13 Vac or 24 Vac/Vdc

FUNCTIONS

- Programming via web, app, USB and SMS
- 2 output relays
- 2 inputs
- CLIP function "calling number recognition for door lock release" through call, app or SMS
- Alarm management
- Up to 3 numbers each user, landline or mobile telephone

LIGHTING SIGNALS

- Conversation status
- Relay activation
- Recording to telephone network



**Programming via
web, app, USB
and SMS**



APPLICATION EXAMPLES

→ VILLAS

long distance between entry door panel
and building

→ SOCIAL HOUSING

security and cost savings



→ B&B

easy communication with the host and
remote access management

→ SOS

non-wired emergency columns

→ Limited traffic zone

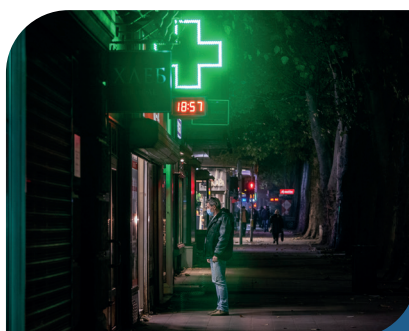


→ PARKINGS

fast communication with the manager and
remote unlocking

→ NIGHT PHARMACY

fast communication with the pharmacist



PRODUCT LIST



AB4G



PD2100AB



DD2140AB



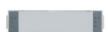
CT2138AB



FP51SAB



AB20



AB21



1MCABS4



1MCAB4



1MCPDAB4



PRS210

CODE	description
AB4G	Audio module myCom 4G/GSM with electric door speaker integrated and ready up to 4 calls max. On Alba range. <i>Dim: mm 99 x 91 x 37.</i>
PD2100AB	Digital keypad module. It allows the internal call through the coding of the corresponding number and door opening through reserved code. <i>Dim: mm 99 x 91 x 37.</i>
DD2140AB	3.5" graphic LCD display module. Electronic index is integrated that allows to scroll and select the single user. <i>Dim: mm 99 x 91 x 37.</i>
CT2138AB	Additional buttons module ready for 8 call buttons max. <i>Dim: mm 99 x 91 x 37.</i>
FP51SAB	Proximity reader with SMART function + bluetooth receiver for access through smartphone. <i>Dim: mm 99 x 91 x 37.</i>
AB20	Cover for the call button, in aluminium. To be mounted AB4G or CT2138AB. <i>Dim: mm 90 x 22.</i>
AB21	Button for single or double call. To be mounted on AB4G module or CT2138AB additional module. Braille is embossed to make it recognizable to visually impaired users. Backlit with white led. <i>Dim: mm 90 x 22.</i>
1MCABS4	Kit with AB4G + PRS210, surface mounting
1MCAB4	Kit with AB4G + PRS210, flush mounting
1MCPDAB4	Kit with AB4G + PD2100AB access control keypad + PRS210, surface or flush mounting
AN41	External antenna
AN02	Adaptor for AN41 external antenna.
PRS210	15VA, 13 Vac transformer. VDE certification. 3 DIN modules

For North and Central American geographic areas please ask FARFISA Technical Service Department for the correct item code suitable for your Country

The ALBA range offers various installation configurations (frames, rain shelters, built-in boxes), for further information contact Customer Service info@farfisa.com or visit the website farfisa.com.



MYCOM



ACI srl via Ezio Vanoni, 3 · 60027 Osimo (AN) ITALY
T +39 071.7202038 · F +39 071.7202037 · info@farfisa.com

