

Type: Bullet - IP - Camera  
Item Code: GU-CI-AP5634T  
EAN CODE: 4260573064892

## SMART

The SMART product line offers comprehensive coverage of modern video systems with advanced AI analysis and solutions for various application areas.

## Highlights

### H.265+



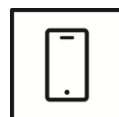
H.265pro+ utilizes the standard H.265/High Efficiency Video Coding (HEVC) format, but boasts advanced technologies that enable it to substantially reduce the necessary transmission bandwidth and storage capacity for maximum efficiency.

### Object Classification



This technology employs a highly advanced deep learning algorithm that can discern whether the alarm was triggered by a human, a vehicle or some other object.

### Smartphone App



The mobile application was developed to facilitate operators in effectively controlling and managing video systems remotely, at any time. It allows for live image viewing, playback of recorded video data, and receipt of remote notifications.

### Deep Learning



Deep Learning is inspired by the complex structure of the human brain. This innovative method allows processing of information and performing corresponding actions based on analysis.

## Features

- Reduction of unwanted alarms (false alarms) by classifying target objects using deep learning algorithms. This significantly reduces false alarms generated by objects other than people or vehicles. This makes finding events easier and saves hard drive capacity
- Motorized Varifocal Lens: f = 5 - 50 mm
- Excellent low-light performance
- White light flash and audible alarm deterrent function
- Many AI functions integrated such as face detection, intrusion detection, object counting, queues, heat map and much more
- Built-in microphone
- Built-in Speaker

**NDA compliant**

GRUNDIG Security's SMART line is fully compliant with the National Defense Authorization Act (NDAA), which prohibits U.S. federal agencies and their partners from using video surveillance and telecommunications equipment or services from certain Chinese companies. This law is part of the John S. McCain NDAA and is effective August 2020.

With our SMART product line, you can be confident that your security system complies with this important regulation. Our products meet the highest standards of quality and reliability, providing you with the security you need to protect your assets and personnel.

**Specifications GU-CI-AP5634T****Camera**

|                     |                              |
|---------------------|------------------------------|
| Image Sensor:       | 1/2.7" progressive Scan CMOS |
| Video Resolution:   | 2880 x 1620                  |
| Sensitivity Colour: | 0.004 Lux @ F1.6 (AGC ON)    |
| Sensitivity B/W:    | 0 Lux LED IR on              |
| Shutter Speed:      | 1/5 ~ 1/20000 s              |
| Slow Shutter:       | Support                      |
| White Balance:      | Auto , Manual                |

**Lens**

|                    |   |
|--------------------|---|
| Lens Focal Length: | 5 ~ 50 mm motorized varifocal lens                              |
| Iris F-Number:     | F2.0  |
| Lens Drive Type:   | Fixed Iris  |
| Focus Adjustment:  | Auto- Focus, Manual - Focus                                     |
| Field of View:     | 45° ~ 7° (horizontal), 33° ~ 5° (vertical), 58° ~ 9° (diagonal) |

**Illuminator**

|                       |             |
|-----------------------|-------------|
| Max. IR Distance:     | Up to 100 m |
| White Light Distance: | Up to 25 m  |
| White LED:            | yes         |

**Video**

|                     |   |
|---------------------|---|
| Col/B&W:            | Auto , Color , B&W, IR-cut filter removable (ICR)   |
| Wide Dynamic Range: | 120 dB  |
| Image Enhancement:  | BLC, 3D DNR, HLC  |
| Image Settings:     | Corridor mode, Saturation, Brightness, Contrast, Sharpness and white balance adjustable by client software or web browser |
| Day/Night Switch:   | Support auto, scheduled, day, night, Image  |
| Privacy zones:      | 6 zones, rectangle  |

**Audio**

|                  |   |
|------------------|---|
| Audio Detection: | Detects unusual noises: dogs barking, babies crying, gunshots, sudden sound increase and decrease |
|------------------|---|

**General**

|                       |              |
|-----------------------|--------------|
| Accessories included: | Junction box |
|-----------------------|--------------|

**Frame Rate**

|              |  |
|--------------|--|
| Main Stream: | 50 Hz: 25 fps (2880 x 1620, 2592 x 1520, 2304 x 1296, 1920 x 1080, 1280 x 960, 1280 x 720)<br>60 Hz: 30 fps (2880 x 1620, 2592 x 1520, 2304 x 1296, 1920 x 1080, 1280 x 960, 1280 x 720) |
| Sub- Stream: | 50 Hz: 25 fps (1280 x 720, 640 x 480, 320 x 240)<br>60 Hz: 30 fps (1280 x 720, 640 x 480, 320 x 240)   |

|                                  |   |
|----------------------------------|---|
| <b>Frame Rate</b>                |   |
| 3rd Stream:                      | 50 Hz: 25 fps (640 x 480, 320 x 240)<br>60 Hz: 25 fps (640 x 480, 320 x 240)  |
| <b>Network</b>                   |   |
| Functions:                       | One-key reset, anti-flicker, three streams, mirror, password protection, privacy mask, IP-address filter  |
| Video Compression:               | H.264, H.264+, H.265, H.265+, MJPEG   |
| Bit Rate:                        | 256 Kbps to 8 Mbps  |
| SD Memory:                       | Built-in Micro SD, SDHC, SDXC slot from 32 up to 256 GB   |
| Client software:                 | C-WERK Viewer, Smart-Line Client PC-Software, IOS App, Android App (GSVM)   |
| Web Browser:                     | Plug-in required live view: IE10/IE11<br>Non Plug-in live view: Chrome 57+, Mozilla Firefox 52+, EDGE 89+<br>Local Service: Chrome 57+, Firefox 52+, EDGE 89+   |
| Network Protocol:                | TCP/IP, IPv4/IPv6, HTTP, HTTPS, FTP, DHCP, DNS, DDNS, RTP, RTSP, NTP, UPnP, SMTP, PPPoE, SNMP   |
| Cyber Security:                  | Different password levels, password protection, complicated password, HTTPS encryption, digest authentication for HTTP/HTTPS, IP address filter, WSSE and digest authentication for ONVIF, RTP/RTSP over HTTPS, control timeout settings, security audit log, TLS 1.0, TLS 1.1 & TLS 1.2, TLS 1.2 with updated cipher suites including AES 256 encryption, Brute Force Delay Protection, Signed Firmware. |
| <b>I/O Interface</b>             |   |
| Audio Input/Output:              | 1-ch audio input and 1-ch audio output  |
| Microphone and Loudspeaker:      | Built in  |
| Alarm Input/Output:              | 1, 1  |
| Network Interface:               | 1x 10, 100 Base T, TX PoE (RJ-45)   |
| <b>Intelligent Functions</b>     |   |
| Motion Detection:                | On, Off, Area Setting, Sensitivity  |
| People & Vehicle Detection:      | Adjustable whether people, motorized or non-motorized vehicles should be detected.  |
| Intrusion Detection:             | People, motorized vehicles or non-motorized vehicles, enter, exit or drive over a predefined virtual area, up to 4 rules are supported  |
| Line Crossing:                   | People, motorized vehicles or non-motorized vehicles cross a pre-defined virtual line, up to 4 rules are supported  |
| Object Removal:                  | Detects objects left over or lost in the pre-defined region such. In this case an alarm notification or signal will be sent automatically and in real time.   |
| Object Counting:                 | Entrance and Exit object number is accounted and showed on screen in real time  |
| Face Detection:                  | Human face appears in the image can be detected and trigger event action  |
| License Plate Recognition:       | Detects and recognizes car number plates. (Data- import- export function, actions can be triggered via the allowed, blocked and other list, only supported with insert SD-Card).  |
| Heat Map:                        | Visualizes the number of people in the surveillance area over a period of time with a simple and user-friendly color scheme   |
| Queue Length Detection:          | Counts people in a predefined area and measures service time. The area, the maximum number of people in it and the maximum service time can be set  |
| Crowd Density Detection:         | Counts people in a predefined area. The area, the maximum number of people in it can be set   |
| Limits of intelligent functions: | Only one of the AI functions can be selected at a time  |
| Event Source:                    | Video tampering, network disconnected, IP address conflicted, motion, various AI functions, sudden audio increase-decrease  |
| Event Action:                    | Send e-mail, trigger alarm output, push notification for GSVM App and C-WERK, upload to FTP/Cloud, trigger HDD recording and/or image capture, show message on screen, PTZ linkage, voice prompt, buzzer  |

**Approvals**

|                    |   |
|--------------------|---|
| Protection Rating: | IP67 (IEC 60529-2013), IK10 (IEC 62262:2002)                |
| Regulation:        | CE, EAC, FCC, RoHS Compliant                                |
| Standard:          | ONVIF (Profile S, Profile G, Profile T, Profile M), SDK/API |

**Environmental**

|                        |                                  |
|------------------------|----------------------------------|
| Operating Temperature: | -35 °C ~ 60 °C (-31 °F ~ 140 °F) |
| Humidity:              | Less than 95%, non condensing    |

**Electrical**

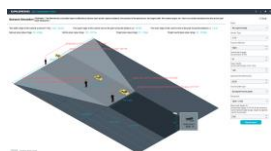
|                    |                            |
|--------------------|----------------------------|
| Supply Voltage:    | 12 VDC, PoE (IEEE 802.3af) |
| Power Consumption: | Max. 9.5 W                 |

**Mechanical**

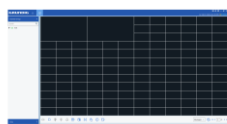
|             |   |
|-------------|---|
| Mount:      | Pan: 0° to 360°, tilt: 0° to 90°, rotation: 0° to 360°, 3-Axis Adjustment |
| Dimensions: | Ø 135 x 354 mm (Ø 5.3 x 13.94 inch)                                       |
| Weight:     | 1900 g (4.19 lb)  |

**Packaging**

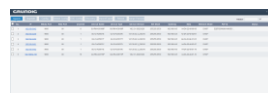
|                          |  |
|--------------------------|--|
| Package Dimensions:      | 415 x 168 x 173 mm (16.33 x 6.61 x 6.81")    |
| Package Weight:          | 2300 g (5.1 lbs)                             |
| Packaging Unit:          | 6  |
| Bulk Package Dimensions: | 525 x 370 x 440 mm (20.7 x 14.6 x 17.3 inch) |
| Bulk Package Weight:     | 12500 g (27.6 lbs)                           |

**Accessories**

GU-SW-INST-TOOL



GU-SW-VMS



GU-SW-IP-FINDER



GU-SW-PLAYER



GD-HW-SD-128GB



GD-HW-SD-256GB



GU-BR-AMC01



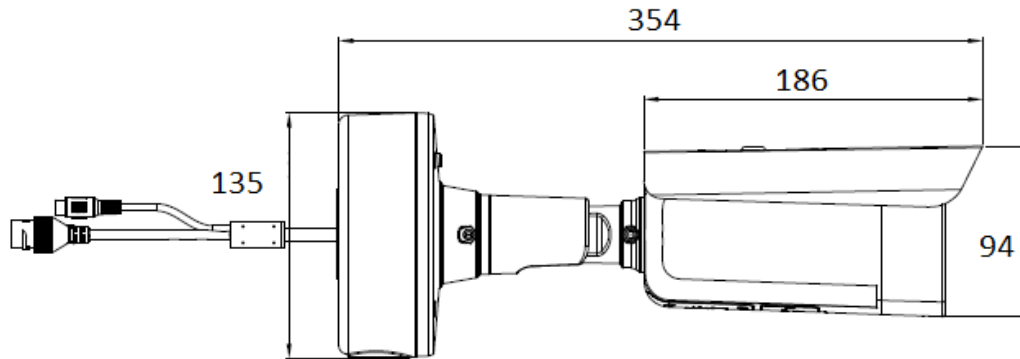
GU-BR-AML01



GU-BR-AMP01

## Dimensions

---



## Guarantee

---

All cameras in the “SMART”, “PRO” and “PREMIUM” product lines have an extended warranty period of 5 years on electronic parts, mechanical wear and tear on moving parts is not included. Please note our general delivery terms and conditions.

## Environmentally friendly packaging

---

Our environmentally friendly packaging with less colour print is made from 100% recyclable material. To save resources, our detailed operating instructions are available online for download. The quick reference guides that come with the devices are printed on 100% recycled paper.